

Byzantine and Islamic Farms – Architectural Criteria

Byzantine Era



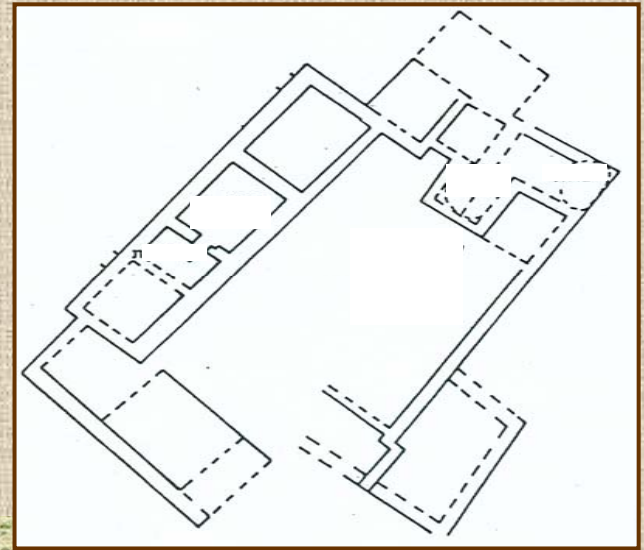
Islamic Era



Cult Articles

Byzantine Era

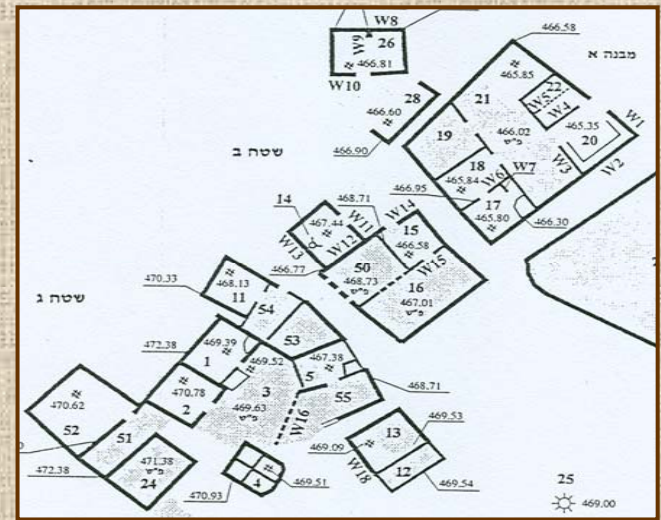
Single Courtyard Building (generally)



Site 133 in the map of Shivta (The reconstructed farm of Evenari et al')

Islamic Era

Several Buildings (generally)



Site 106 in the map of Sde-Boker – West (the site of Nahal ha-Besor)

Byzantine Era

Big stones

Roughly hewn

Malt between the stones (maybe)



Islamic Era

Medium size stones

Almost not hewn

Big stones for lintels

Dry building



**In many Byzantine farms,
even in simple building,
you can see architectural
components such as:
Pillars, Capitals and
Decorated Items**

